

CAN YOU FIND THIS?

- FINDING HIDDEN THREATS:** Are valid integrity threats being thoroughly detected? With five sensors, our multiple dataset platform (MDS) detects interacting anomalies often missed by conventional in-line inspection (ILI) technologies. Combining it with an electromagnetic acoustic transducer (EMAT) achieves unparalleled assessment capability in two tools.



COMPREHENSIVE ASSESSMENT

Utilizing advanced ILI technology, we have been expanding our ability to detect difficult-to-find pipeline anomalies. We are developing solutions for operators who ask, "Can you find this?" when it comes to non-axial stress corrosion cracking, potential for cracking in branch connections, planar defects in wrinkle bends, and more.

APPROACH

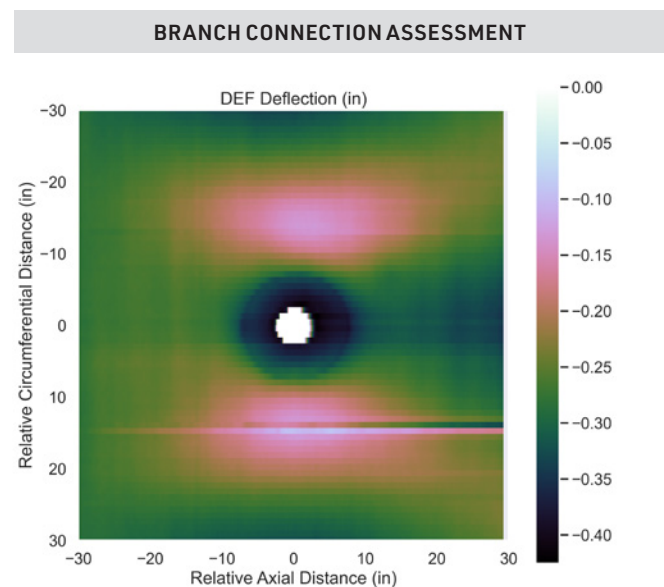
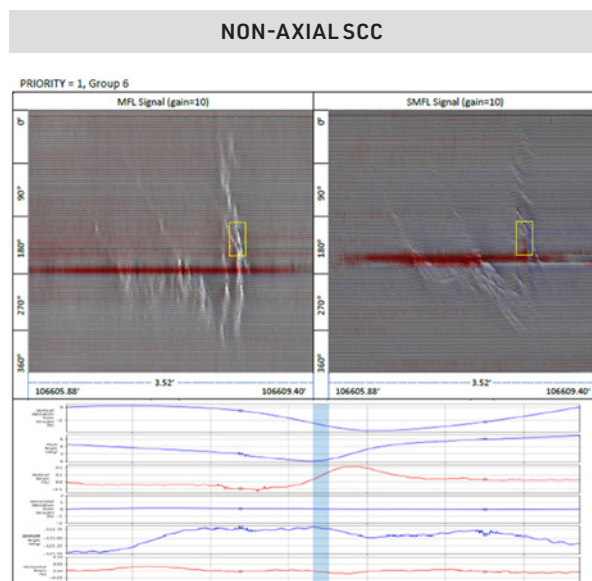
Pushing to new limits

We use a mix of data sciences and integrity engineering to assess signal data and convert this to anomaly information that can be used to determine integrity.

VALUE

Uncovering new threats

Our highly skilled team reviews comprehensive inspection results to discover those defects that cannot be found easily, then provides the appropriate prioritization. Field data can enhance our understanding allowing us to focus on those key anomalies, saving significant digs and repairs.



EXTENDING BEYOND INSPECTION

- ▶ Improving safety, efficiency and productivity throughout the life of your pipeline.

ASSESSMENT SERVICES



Immediate Integrity Assessment

IMMEDIATE THREATS:

- ▶ Metal loss
- ▶ Dent strain
- ▶ Bending strain
- ▶ Selective seam weld corrosion
- ▶ Cracks
- ▶ Mechanical damage



Future Integrity Assessment

TIME-DEPENDENT THREATS:

- ▶ Corrosion growth
- ▶ Line movement
- ▶ Crack growth
- ▶ Dent fatigue
- ▶ Other changes in pipeline conditions



Advanced Integrity Assessment

MORE COMPLEX THREATS:

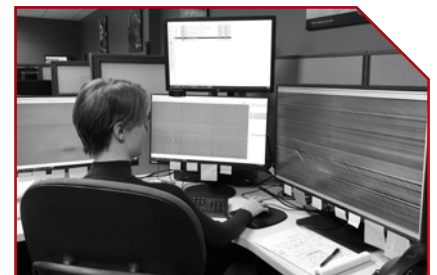
- ▶ Non-axial stress corrosion cracking
- ▶ Branch connection loading
- ▶ Wrinkle bends
- ▶ Hard spots
- ▶ Other threats requiring finite element analysis (FEA)

Using the right approach

The right assessment approach, consistent with codes, industry-accepted methods and operator mandates, ensures compliance and auditability.

Focus on the right decisions

By focusing on the anomalies that matter most, you can make the best integrity decisions for your pipeline.



Contact your TDW sales representative for more info.



T.D. Williamson

