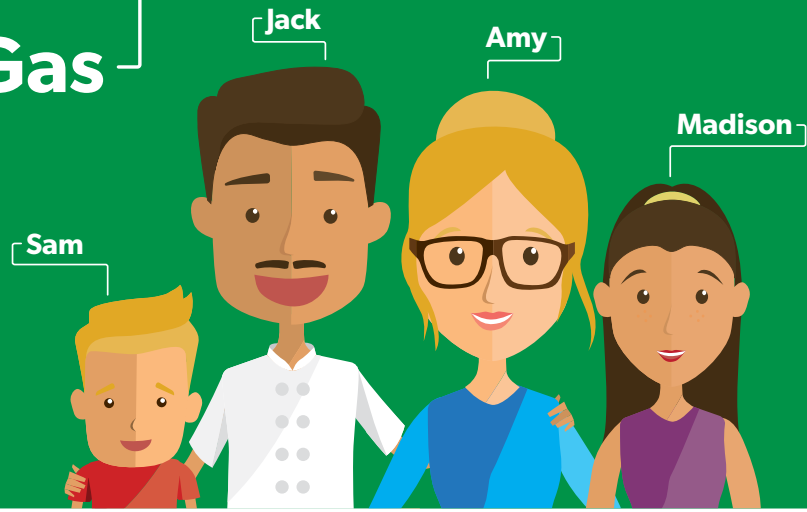


# Everyday Life Powered by Natural Gas

## Meet the Powers family.

They may not always realize it, but natural gas plays a pretty significant role in their everyday life. They use natural gas to heat and cool their home and to cook their meals. It's even used to make many of the products and goods that they need and enjoy most.

**Take a look** at just how much natural gas impacts each family member throughout an average day.



**AM**

It costs about **1/3** as much to cook with a natural gas range compared with a similar electric range.

Like most professional chefs, Jack prefers cooking with **natural gas**.

Amy uses running shoes manufactured with the help of **natural gas**.

Refineries break down **natural gas** into mineral oil that's used in almost all of Madison's cosmetic products.

Sam's toothpaste tube is made out of a plastic that's manufactured from **natural gas** to protect it from germs.

**NOON**

**Natural gas** is used in the fertilizing process to produce the food Jack serves in his restaurant. It's also used in the production of cooking utensils.

The oil and natural gas industry supports **9.8 million** jobs in America.

As a **natural gas** engineer, Amy is responsible for analyzing data delivered by "smart pigs," which are used to inspect pipeline integrity.

Madison's paints stay liquefied in the can with a solvent made from hydrocarbons broken down from **natural gas**.

The outside of Sam's soccer ball is made up of synthetic rubber which is created as a by-product of **petroleum refining**.

**PM**

Jack enjoys watching cooking shows on his TV, which draws electricity from **natural gas**.

Amy places a bandage – produced by **natural gas** – to a scrape on Sam's knee.

About **1/3** of all U.S. electricity is generated from natural gas.

Without natural gas, Madison would not be able to charge her phone which is made of plastic that's produced by **natural gas**.

Sam plays his favorite video games on consoles made with plastics produced by **natural gas**.